



Northern Lights Distro

Sample 616-041123-060

Runtz

Batch/Lot # RT18239

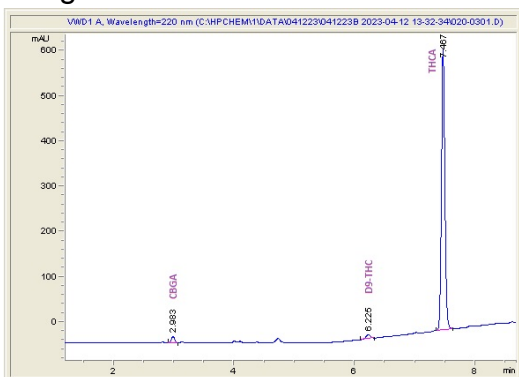
Sample Submitted: 04-11-2023; Report Date: 04-13-2023

Runtz

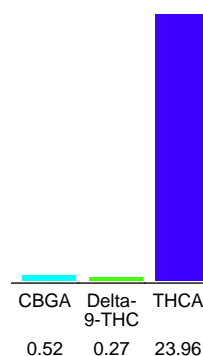
Plant Material: Flower

Batch/Lot # RT18239

Chromatogram



Cannabinoid Profile



Cannabinoid Profile by HPLC

0.27%
Delta-9-THC

0.00%
CBD

24.75%
Total Cannabinoids

Cannabinoid	% wt	mg/g
CBGA	0.52	5.2
Delta-9-THC	0.27	2.7
THCA	23.96	239.6
Total Cannabinoids	24.75	247.5
Calculated Delta-9-THC Yield	21.28	212.83
Calculated CBD Yield	0.00	0.00

Calculated Maximum Delta-9-THC Yield = Delta-9-THC + 0.877 * THCA
 Calculated Maximum CBD Yield = CBD + 0.877 * CBDA

Marin Analytics, LLC
 250 Bel Marin Keys Blvd, Suite D4
 Novato, CA 94949
 415-936-6477 / sarabiancalana1@gmail.com

Sara Biancalana
Sara Biancalana
 Chief Scientist

This sample has been tested by Marin Analytics, LLC using valid testing methodologies and a quality system. Values reported relate only to the sample tested. Marin Analytics, LLC makes no claims as to the efficacy, safety or other risks associated with any detected or non-detected levels of any compounds reported herein. This Certificate shall not be reproduced except in full, without the written approval of Marin Analytics, LLC. Copyright 2022 Marin Analytics, LLC All Rights Reserved.